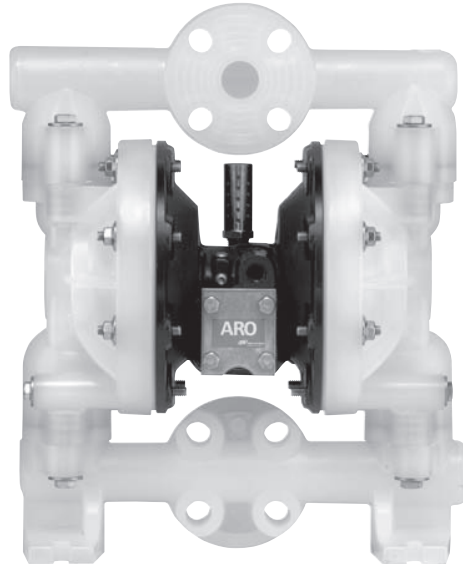


1" Non-Metallic Models Pro-Series Pumps

1" Non-Metallic Performance Specifications

Ratio:	1:1	
Maximum Flow:	47-g.p.m. (177.9-l.p.m.)	
Displacement per cycle:	0.17-Gallons (0.64-Liters)	
Air Inlet: (Female)	1/4 - 18 N.P.T.	
Fluid Inlet:	1 - 11-1/2 N.P.T.F. - 1 Rp 1 (1 - 11 BSP, parallel) 1" ANSI/DIN Flange	
Fluid Outlet:	1 - 11-1/2 N.P.T.F. - 1 Rp 1 (1 - 11 BSP, parallel) 1" ANSI/DIN Flange	
Max. operating pressure:	120-psi (8.3-bar)	
Suspended solids max. dia.:	1/8-inch (3.2-mm)	
Weight: lbs (kg)		
	6661A3-, 1AE-, 1AJ-, 1AL-	20.3 (9.2)
	6661A4-, 1AG-, 1AK-, 1AN-	28.5 (12.9)
	6661B3-, 1BE-, 1BJ-, 1BL-	28.8 (13.1)
	6661B4-, 1BG-, 1BK-, 1BN-	37.0 (16.8)

Maximum dry suction lift: 15-ft (4.6-m) Rubber fitted



Ordering Menu

6661X	X	-	X	X	X	-	G
Center Body	Fluid Caps/ Manifold Material		Seat Material	Ball Check Material	Diaphragm Material		
A Aluminum	3 Polypropylene Flange (3-piece manifold)	2 316 Stainless Steel	3 Viton	3 Viton			
B Cast Iron	4 PVDF Flange (3-piece manifold)	3 Polypropylene	4 PTFE (Teflon)	4 PTFE (Teflon) / Santoprene			
	F Polypropylene Flange (one-piece manifold)	4 PVDF	8 Polyurethane	8 Polyurethane			
	G PVDF Flange (one-piece manifold)	8 Hard 400 Stainless Steel	A 316 Stainless Steel	A 316 Stainless Steel	9 Hytrel		
	J Polypropylene N.P.T. threads (one piece manifold)	Steel	C Hytrel	C Hytrel	B Santoprene		
	K PVDF N.P.T. threads (one-piece manifold)		E Santoprene	E Santoprene	G Nitrile		
	L Polypropylene BSP threads (one-piece manifold)		G Nitrile	G Nitrile			
	N PVDF BSP threads (one-piece manifold)						

Accessories

Air Line Connection Kit* | Kit No. 66073-2

Kit includes Piggyback Filter/Regulator with gauge, pipe nipple and a 5-foot section of air hose.

Service Repair Kits | Kit No. 637118-C (air section)
Kit No. 637161-XX-C (fluid section)

Flange Connection Kit | Kit No. 67078 (for 1" Non-Metallic Pumps)

For pumps with inlet/outlet flange manifolds. Kit meets ANSI specifications. Flange constructed of glass-filled polypropylene. Bolts, washers and nuts are stainless steel. Gasket is 4401 klinger synthetic fiber nitrile binder.

*Please note pumps are not included with these kits.



Air Line Connection Kit
66073-2

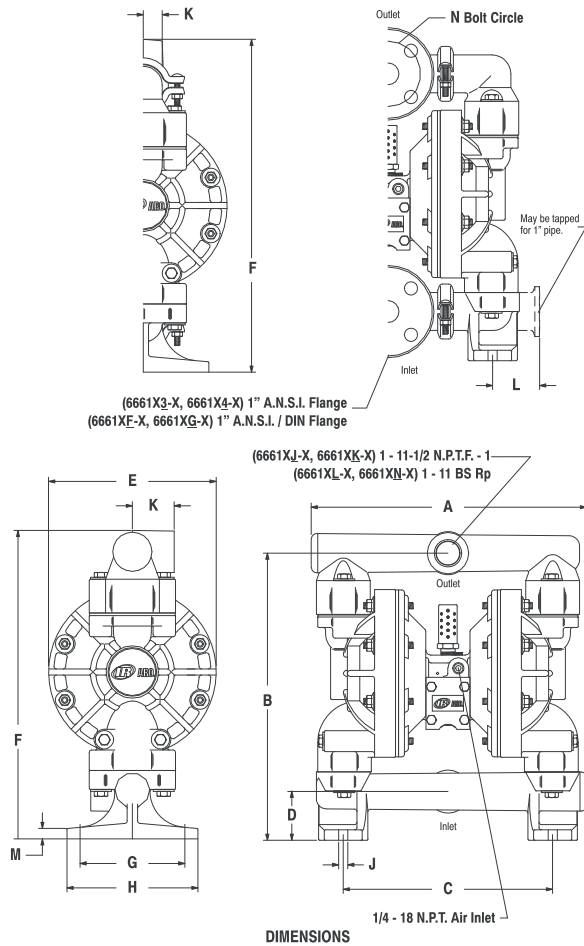


Flange Connection Kit
67078

1" Non-Metallic Dimensions and Flow Curves Pro-Series Pumps

DIMENSIONAL DATA

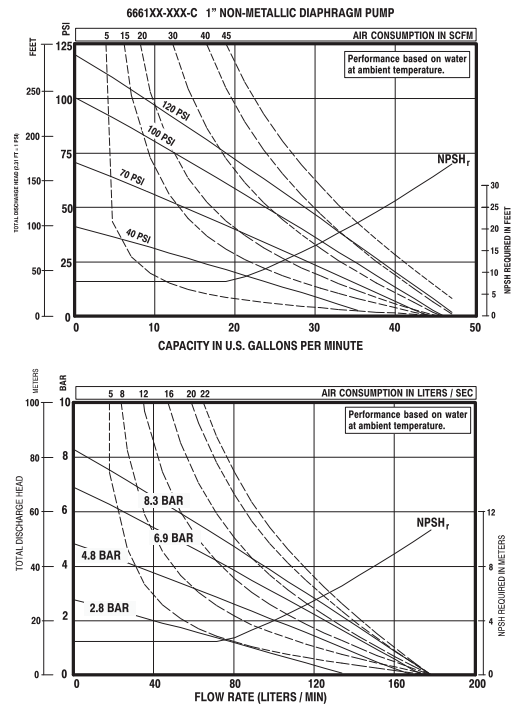
Dimensions shown are for reference only, they are shown in inches and millimeters (mm).



DIMENSIONS

	6661X3-X	6661X4-X	6661XJ-X 6661XL-X
A	12-21/32" (321 mm)	12-15/32" (316 mm)	13-5/32" (334 mm)
B	13-25/32" (349 mm)	13-19/32" (345 mm)	13-25/32" (350 mm)
C	10-1/16" (255 mm)	9-15/16" (252 mm)	10-1/16" (255 mm)
D	2-3/8" (60 mm)	2-11/32" (59 mm)	2-11/32" (59 mm)
E	8-1/16" (204 mm)	7-15/16" (201 mm)	8-1/16" (204 mm)
F	16" (406 mm)	15-25/32" (400 mm)	14-13/16" (376 mm)
G	5-1/32" (128 mm)	4-31/32" (126 mm)	5-1/32" (128 mm)
H	6-9/32" (160 mm)	6-7/32" (157 mm)	6-9/32" (160 mm)
J	7/16" (11 mm)	7/16" (11 mm)	7/16" (11 mm)
K	15/16" (23 mm)	29/32" (23 mm)	2" (51 mm)
L	2-9/32" (57 mm)	2-1/4" (56 mm)	
M	1/2" (13 mm)	1/2" (13 mm)	1/2" (13 mm)
N	3.140" (80 mm)	3.097" (79 mm)	
	6661XK-X		
	6661XN-X	6661XF-X	6661XG-X
A	13-1/32" (331 mm)	13-5/32" (334 mm)	13-1/32" (331 mm)
B	13-19/32" (345 mm)	13-25/32" (350 mm)	13-19/32" (345 mm)
C	9-15/16" (252 mm)	10-1/16" (255 mm)	9-15/16" (252 mm)
D	2-5/16" (59 mm)	2-11/32" (59 mm)	2-5/16" (59 mm)
E	7-15/16" (201 mm)	8-1/16" (204 mm)	7-15/16" (201 mm)
F	14-5/8" (371 mm)	16" (406 mm)	15-25/32" (401 mm)
G	4-31/32" (126 mm)	5-1/32" (128 mm)	4-31/32" (126 mm)
H	6-7/32" (157 mm)	6-9/32" (160 mm)	6-7/32" (157 mm)
J	7/16" (11 mm)	7/16" (11 mm)	7/16" (11 mm)
K	1-25/32" (50 mm)	1-1/32" (26 mm)	1" (25 mm)
L			
M	1/2" (13 mm)	1/2" (13 mm)	1/2" (13 mm)
N		3.140" (80 mm)	3.097" (79 mm)

PERFORMANCE CURVES



Refer to www.irtools.com/aro/ for full size flow curves.

For additional information contact technical support at (800)495-0276

NON-METALLIC